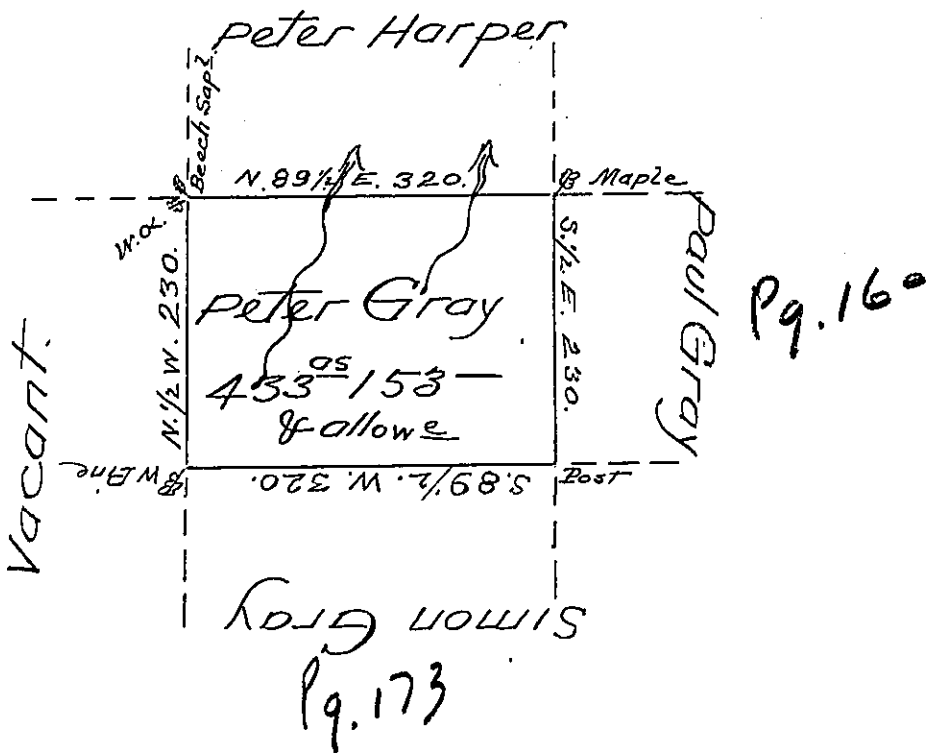


C-93-172



A Draught of a tract of land called  
 Situate in the County of Luzerne adjoining Peter  
 Harper & others surveyed the 16<sup>th</sup> day of Novemr.  
 1792 for Peter Gray in pursuance of a warrant  
 bearing date the 3<sup>d</sup> day of April 1792 Contain-  
 ing Four hundred thirty three acres & one hun-  
 dred fifty three perches & the usual allowance  
 of six per Cent for roads &c.

Anty. Crothers D.S.

To Dan! Brodhead Esqr }  
 Surveyor General - }

IN TESTIMONY that the above is a copy of the original remaining on file in  
 the Department of Internal Affairs of Pennsylvania, made  
 conformably to an Act of Assembly approved the 16th day of  
 February, 1833, I have hereunto set my Hand and caused  
 the Seal of said Department to be affixed at Harrisburg,  
 this Twenty fifth day of October 1904.

*Isaac B. Brown*  
 Secretary of Internal Affairs.